

IN THIS EDITION:

- Monthly Art Challenge
- Exhibitions
- Call to Members
- Artist's Tip
- PAC History
- Artist Resources
- Save the Date
- PAC Events

CONTACT US:

- Website: parrishartscouncil.org
- Email: getinvolved@parrishartscouncil.org
- Facebook: [Parrish Arts Council](https://www.facebook.com/ParrishArtsCouncil)
- Instagram: [@ParrishArtsCouncil](https://www.instagram.com/ParrishArtsCouncil)

MEMBERSHIP

- \$25 per year
- Runs January - December

PARRISH
Arts
COUNCIL

A 501(c)3 organization

April ART Challenge

The April Art Challenge is "Pen and Ink". Artists from several ancient cultures started using this medium. Depending on the location and time period, early inks and pens were created with different materials. Artists who wanted to explore a variety of styles and methods might use a tool not invented in their country. For example, Rembrandt used the reed pen, from China, along with quill pens to create certain illusions. Today the steel pen is the popular tool because of its many choices. There are numerous resources available on techniques, so have fun sharpening your skills or trying something new. Please post your artistic ideas and completed artwork on our Facebook page. And tag #parrishartscouncil on Instagram. Express and share your creativity. We are looking forward to seeing what everyone shares. For more information, check out the Call to Artist link on our website parrishartscouncil.org. If you have an idea for a future challenge, contact us, getinvolved@parrishartscouncil.org.



ArtConversations! - April 18th from 6pm - 8pm

Chrysti Arvanitis will be offering a workshop on Mixed Media Collage with a project to take home. Supplies will be provided, but feel free to bring some of your own. Please RSVP.

Check our website for more information.

parrishartscouncil.org

Artist Resources

Life and Food Superstore -

This bulk food store also carries art supplies and offers art classes. For more information go to their website.

<https://www.lifeandfoodsuperstore.com/>

Art and Frame of Sarasota -

This store offers many art supplies and weekly classes. Check out their website for more information at

<http://www.art-supplies-sarasota.com/>

Exhibitions

Trish Kocialski at The Rocky Bluff Library.

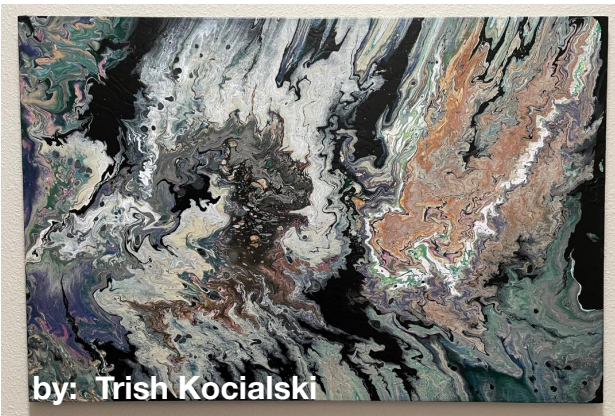
March 4th - April 29th

Thank you, Rocky Bluff, Library for hosting!

Artist Favorites - ComCenter of Lakewood Ranch is hosting a PAC Membership Showcase from 2/1/2023 - 5/5/2023. Come and see original artwork by Parrish Arts Council Members.

See our Facebook page for a peek at all the artwork via a slide show and then see the exhibit in person between 8:30am - 5:00pm at the ComCenter.

Photography Competition - September and October with the theme, "Hit Us With Your Best Shot".



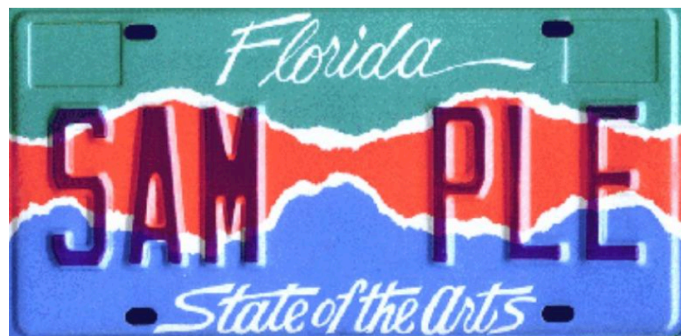
by: Trish Kocialski

Artist's Tip

Our tip connects with this month's challenge of creating artwork using pen and ink. The basic tools of this medium are the pens, nibs (pen points) and ink. Some inks are waterproof so you can paint over it with a wash, but others can be rubbed with a little water to create softer tones. Today there's a variety of pens such as markers and colored inks. Try a crow quill for super fine lines. There are books and other resources regarding the techniques of pen and ink to get you started. As always, don't worry about mistakes since sometimes they become surprises, and with all those lines no one will even notice.

Feel free to add your tips to our Facebook Page. If you have any subjects you'd like to get tips on, ask us on Facebook or email us at

getinvolved@parrishartscouncil.org.



Support the ARTS with an Art license plate. The dollars earned from the license plate program is how the Bradenton Area Arts & Culture can support the local art groups - <https://myfloridaspecialtyplate.com/state-of-the-arts.html>

Save the Date

PAC History

Plein Air Events -

This is a Membership Benefit, but you can bring one guest. Bring your art supplies, camera, or just a chair to relax and enjoy the scenery. We are offering 2 events for the month of April.

Country Oaks Homestead -

12300 Parrish Cemetery Rd, Parrish, FL

Tuesday, April 11th, starting at 9 am.

There are plants, flowers, trees, structures, and antiques. You can take a break at 11 to talk about your work with other artists.

Florida Railroad Museum -

18850 Willow Rd, Wimauma, FL 33598

Sunday, April 30th, starting at 8:30 am

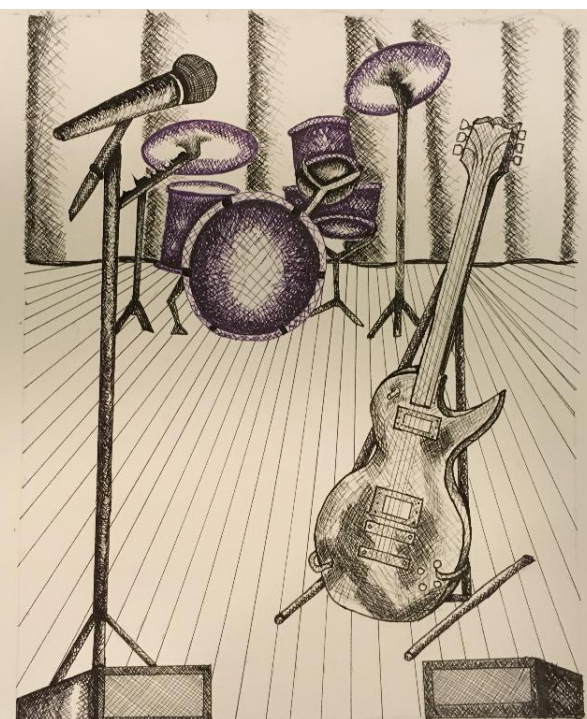
Lots to see and do at this venue!

Check our Facebook page for more information. [Parrish Arts Council](#)

Artfully Angels -

Life & Food Superstore - 6234 US-201
Ellenton, FL 34222

April 29th from 9am - 12pm.



Pen and Ink by: Nancy White

Parrish Arts Council 10th Anniversary

The Parrish Arts Council has more history to share below as we continue to celebrate 10 years as a non-profit organization dedicated to building and enriching the community through the arts and art education.

The Council was founded in 2012 as a small group of people who love their community and whose vision was to promote the arts in Parrish and neighboring communities. The Arts Council has since grown into a larger group of artists and art enthusiasts.

2017 - The Council held its first **Paint Around** with 5 artists collaborating to create 5 acrylic paintings in 2 hours. This event has continued throughout the years as an important fundraiser to help local art teachers.



Call to Members!

Feel free to post to our Facebook Page and Instagram.

We are always looking for artists, volunteers, and sponsors that want to participate, learn, share, and network with other artists and art enthusiasts.

PAC Events

PAC Event - Plein Air at Rye Preserve

Several artists got together to paint some of the beautiful scenes at Rye Preserve in Parrish. It's a lot of fun to learn and support one another.



Painting Outside at Rye Preserve

Art Conversations -

Thank you to patsy monk who taught us about polymer clay. We are now ready to explore new ways to use this versatile medium.



Polymer Clay

Benefits

- Opportunities to exhibit
- ArtConversations!
- Sharing knowledge
- Meeting other artists
- Supporting the community with the ARTS
- Learning and sharing skills
- A link to your artwork
- Discounted fees for certain activities/events
- And keeping art in the community are just a few to mention

Support the ARTS with an Art license plate. The dollars earned from the license plate program is how the Bradenton Area Arts & Culture can support local art groups - <https://myfloridaspecialtyplate.com/state-of-the-arts.html>

Membership

- Single Adult - \$25
- Single Youth - \$15
- Single College Student - \$15

Runs annually from January - December. If you join in November, your membership is good for the following year.

The Parrish Arts Council is a 501©3 non-profit serving Manatee County and the surrounding region since 2013.

“PAC will support local artists and cultivate an artistically inspired community.” PAC is dedicated to building and enriching the community through the ARTS.